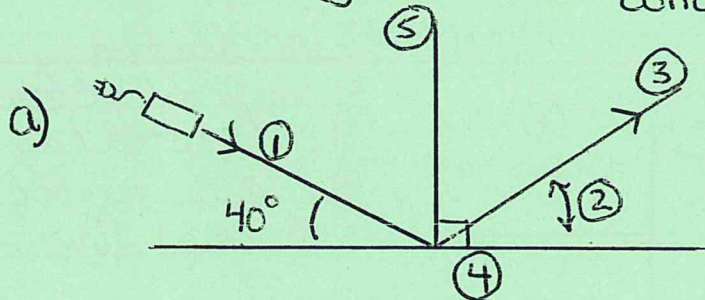


# Light Energy Review

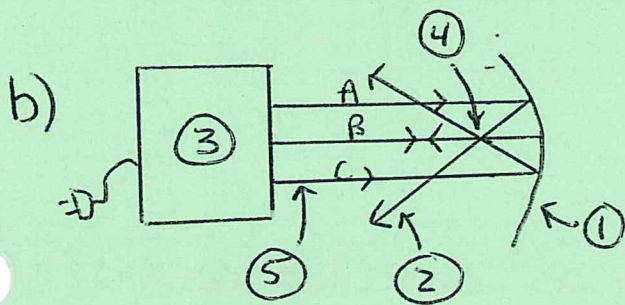
Name: Key

1. Use the following terms to label the following diagrams (terms may be used more than once):

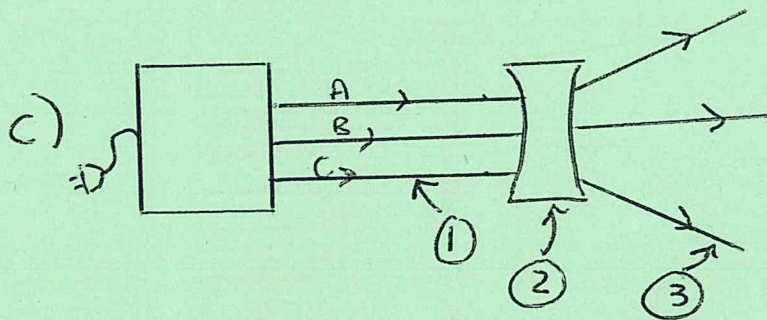
- |                            |                            |                     |
|----------------------------|----------------------------|---------------------|
| mirror                     | angle of refraction        | convex lens         |
| incident ray               | refracted ray (converging) | convex mirror       |
| reflected ray (diverging)  | refracted ray (diverging)  | focus point         |
| reflected ray (converging) | concave mirror             | ray box             |
|                            | concave lens               | angle of reflection |



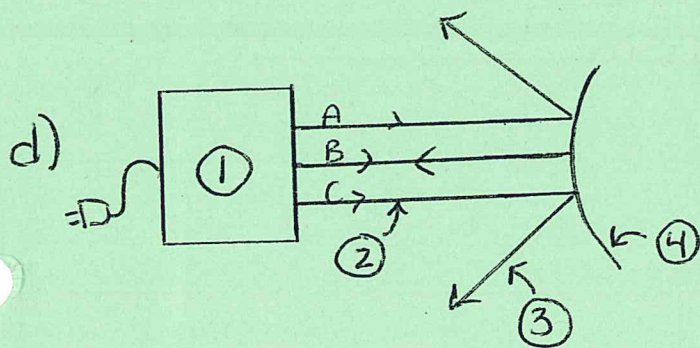
- 1) incident ray
- 2) angle of reflection
- 3) reflected ray
- 4) right angle 90°
- 5) Normal Line



- 1) Concave mirror
- 2) reflected ray (converge)
- 3) Ray box
- 4) focus or focal point
- 5) incident ray

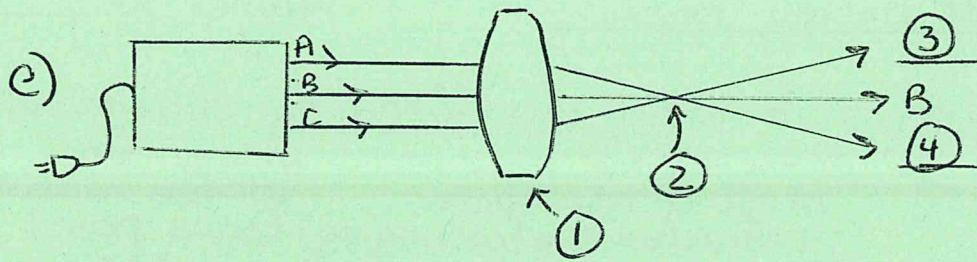


- 1) incident ray
- 2) Concave ray
- 3) refracted ray (divergi

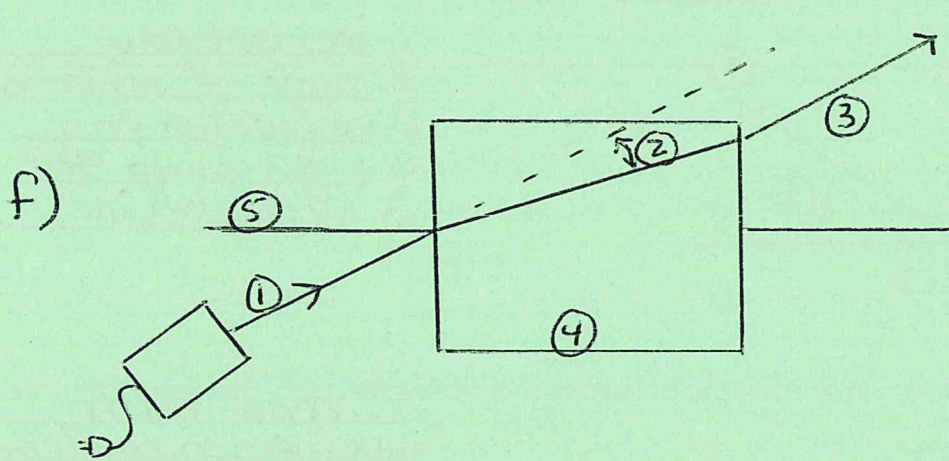


- 1) Ray box
- 2) incident ray
- 3) reflected ray (divergi
- 4) convex mirror



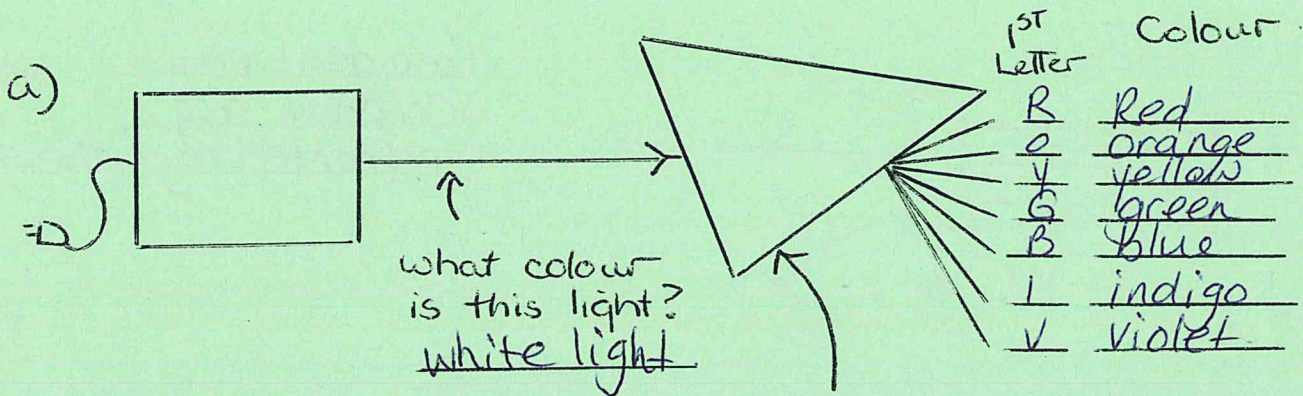


- 1) convex lens
- 2) focus or focal point
- 3) C
- 4) A



- 1) incident ray
- 2) angle of refraction
- 3) refracted ray
- 4) glass / water
- 5) normal line

Label the following diagram as detailed as possible.



what colour is this light?  
white light

what is this?  
prism